



KINGSTON ARTS PRECINCT BY SUBURBAN LAND AGENCY

The Kingston Arts Precinct is a visual arts hub in the heart of the Kingston Foreshore with opportunities for integration with a new mixed use commercial and residential development. ACT Government is delivering the arts hub through a land sale process that elevates innovative design and place making as the drivers of the future development outcomes.

The site is home to the first two permanent public buildings built in Canberra, playing an important part in the early development of Canberra as source of power generation and has been heritage-listed for its industrial and architectural significance. The site tour will explore how Geocon's proposed design concept for the Kingston Arts Precinct will integrate new uses with those already on-site, as well as complement and enhance existing heritage values.

Kingston Arts Precinct tour presented by:

Jacqueline Bartholomeusz

Associate Director, Fender Katsalidis

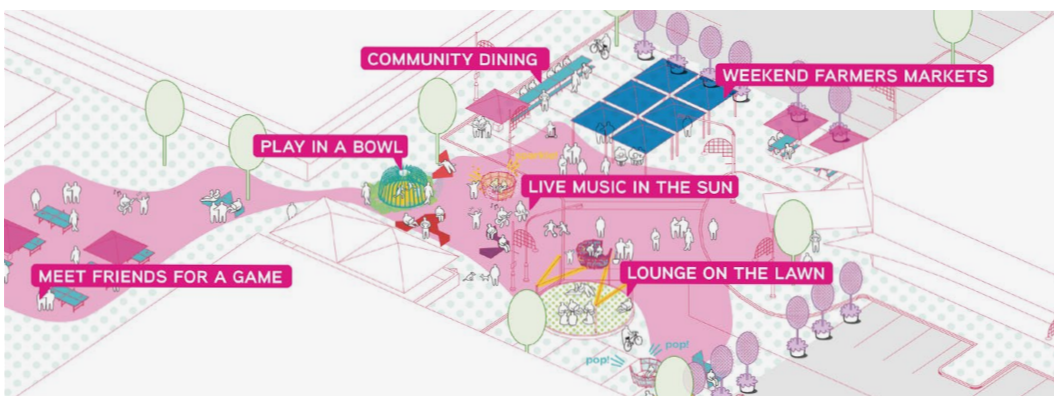
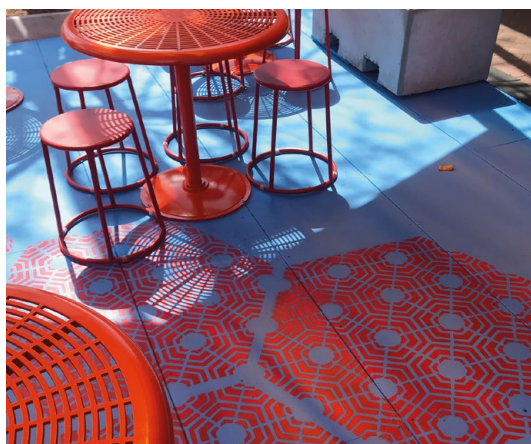
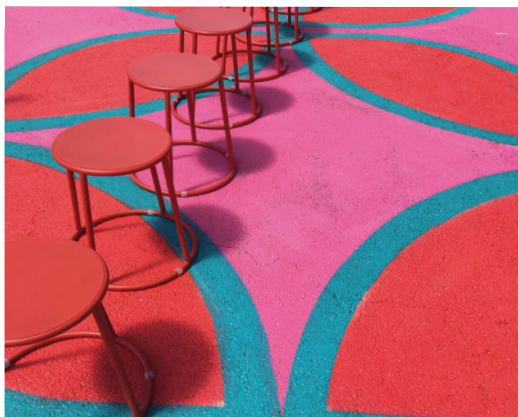
Irena Sharp

Development Director, Urban Projects,
Suburban Land Agency



Artists impression. Images by Fender Katsalidis





SPICING UP DICKSON BY PLACE LABORATORY

First stop is Dickson Village to hear about the seven day makeover, a community led activation that was the catalyst for the ACT government's adoption of an action orientated planning approach to revitalise the tired public spaces of Dickson.

Second stop is the micro park at Dickson Swimming Pool, a demonstration of how a small intervention can transform an underutilised space into a hub of activity.

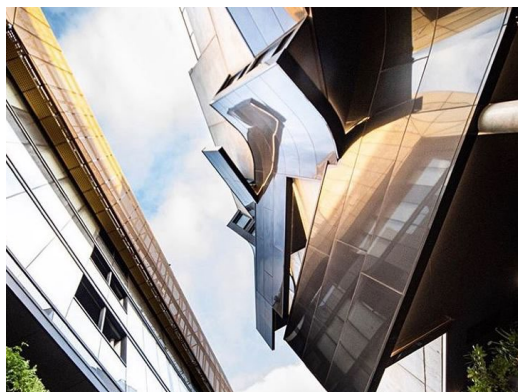
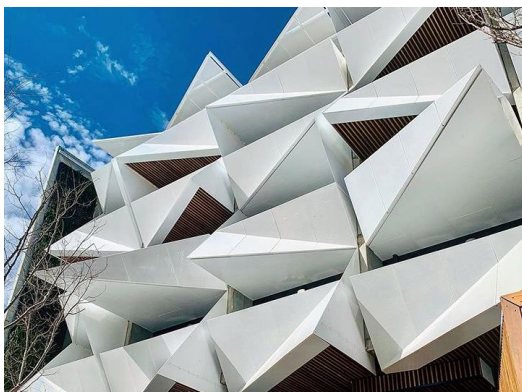
Final stop is Woolley Street to experience firsthand the action orientated planning approach, an iterative design process developed using place planning, experimentation, measurement and consultation.

Spicing Up Dickson tour presented by:

Anna Chauvel is a local Canberra landscape architect and co-founder of PLACE Laboratory. She is an advocate of a people focused approach to designing public spaces, using landscape architecture as a way to connect people with place.

Jason Jhay Mann is a small business owner that found place making through change and uncertainty in his shopping centre. Highly passionate and driven, Jhay discovered he has an inherent knack for working with local community to inspire place making values.





Images by Bulum Group

LONSDALE STREET, BRADDON BY THE BULUM GROUP

Join us for a walking tour to explore how a privately led and creative redevelopment of Lonsdale Street Braddon has turned a vacant industrial area into a thriving retail and hospitality haven.

Beginning at the Ori Building in Braddon, this tour will progress through Ori Arcade towards the area between the Palko and Nibu Buildings to hear the story of how the pop up strategy zone known as the Lonsdale Street Traders was used to bring activation and people in the in area.

It will then move on to the old Hamlet site, which was home to a temporary food truck village, born to activate the area further with its hospitality offerings.

On its last stop, it will move to the sculpturally expressive Yamaroshi Building on Mort street and its adjacent laneways, which have been built to a small scale in order to allow room for creativity and expression to emerge, and to encourage people to make their own spaces.

Lonsdale Street tour presented by:

Nik Bulum

Director, Bulum Group

Susan Davison

Member, The Braddon Collective

The Braddon Collective is a community group (<https://braddoncollective.com/>).



TOUR MEETING POINTS

KINGSTON ARTS PRECINCT BY SUBURBAN LAND AGENCY

Meeting point: 10 am at the entrance to the Canberra Glassworks, 11 Wentworth Avenue, Kingston

How to get there: Take the bus R6 to Woden from the stop opposite the City Police Station on 18 London Circuit and get off at the Old Bus Depot Markets stop on Wentworth Avenue. The Canberra Glassworks are very close by.



SPICING UP DICKSON BY PLACE LABORATORY

Meeting point: 10 am at the stage in front of Dickson Library, Antill Street, Dickson.

How to get there: Take the # 31 bus (direction to Belconnen) from Canberra Centre and get off at Dickson Shops Antill Street. The Library is a 2 minute walk. Or, take the #1 light rail from Alinga Street Platform 2 (direction Gungahlin Pl) and exit at Dickson Platform 2. The library is an 11 minute walk.



LONSDALE STREET, BRADDON BY THE BULUM GROUP

Meeting point: 10 am at the Ori building, 30 Lonsdale Street, Braddon.

How to get there: Take the number 1 tram to Elouera Street stop and walk about 5 minutes to Ori building.

